

- Monorail connecting Lower Parel in 20 mins.
- Elevated Freeway connecting Fort in 20 mins.
- Anik - Panjarpol Link Road connecting Mumbai Pune Expressway in 20 mins.
- Sewri - Nhava Sheva Sea Link connecting Navi Mumbai in 20 mins.
- Bandra Kurla - Chembur Link Road connecting Eastern and Western Express Highway in 20 mins.

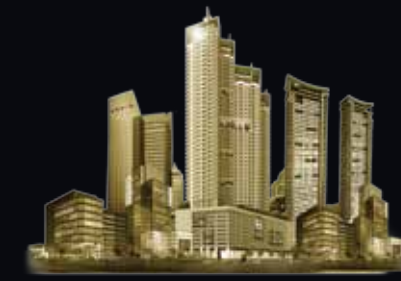
Map not to scale



Site: AJMERA i-LAND, Next to I-MAX Bhakti Park, WADALA (E).

T: +91-80800 53000 | E: iland@ajmera.com | W: www.ajmera.com

Disclaimer: All the specifications, designs, facilities, dimensions etc. are subject to the approval of the respective authorities. The developers reserve the right to change the specifications or features without any notice or any obligation.



AJMERA
i-LAND
 WHERE FUTURE LIVES
 WADALA (E)



Aeon MahaRERA Reg. No. P5180000789

Available at website <http://maharera.mahaonline.gov.in>



Rendered Image



Reference Image



Reference Image



Reference Image



Reference Image

First Residential Tower of
Ajmera i-Land, Wadala (E)

32-storey tower with
2, 3 & 4 BHK apartments

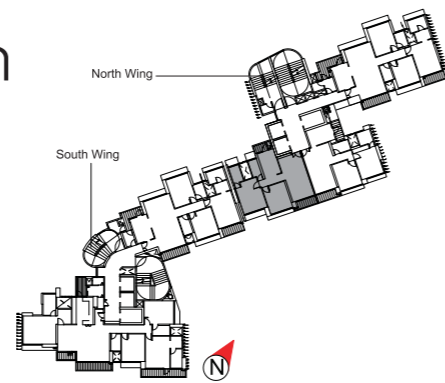
Features

- Grand clubhouse
- Ritzy swimming pool
 - Children's pool
- Well-equipped gymnasium
 - Steam, sauna & jacuzzi
 - Health spa
- Coffee shop / sports bar
 - Yoga room
- Pool side party deck with barbecue
 - Sky garden / deck
- Terrace level party lawn
 - Children's indoor and outdoor play areas
 - Sand play area
 - Jogging track
 - Old folks' corner

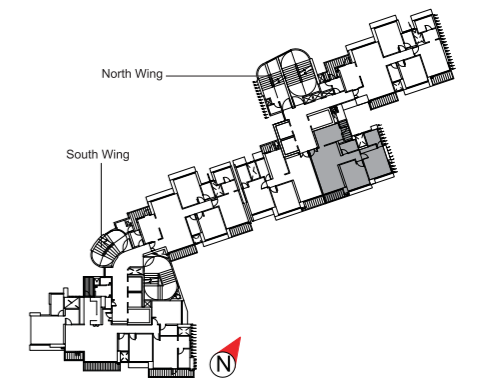
Typical Floor Plan



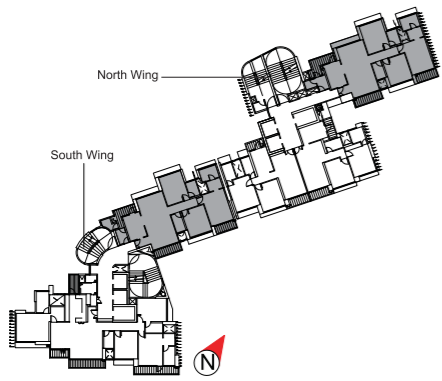
2 BHK A Floor Plan



2 BHK B Floor Plan



3 BHK Floor Plan



4 BHK Floor Plan

